



CHICAGO STAINLESS EQUIPMENT

SANI-FLOW

THERMOWELLS



Quality Products Since 1937
www.chicagostainless.com

ISO 9001:2000
ISO 13487:2003



Member of:

fisa
Distributors Serving
Sanitary Processing

MADE IN USA





SANI-FLOW

THERMOWELLS

Chicago Stainless Equipment has been manufacturing equipment for the dairy, food processing and pharmaceutical industries for nearly 3/4 of a century. We have incorporated the experience of manufacturing the world's finest sanitary thermometers when we designed our sanitary thermowells. The Sani-Flow Sanitary Thermowell is built to withstand the harshest environment and function for many years with little or no maintenance. Our dedication to quality is not only evident in our products, but also in our customer service. We offer immediate availability on all products and respond quickly with quality service at reasonable prices. We feel so strongly about the quality of our products and service that we guarantee complete satisfaction.

FEATURES

Durability: Constructed with 316L stainless steel to assure maximum corrosion resistance. A clean design allows the thermowell to be hosed down or submersed for cleaning.

Specifically Designed for use in the food, dairy and pharmaceutical industries. All sanitary thermowells have a 1/2" NPT Female Thread.

Custom Probe Lengths available in a matter of days not weeks.

Low Profile saves space and allows for easy washdown and maintenance.

Service: Thermowells are available from stock ready to ship. No hassle return policy. No restocking charge on standard thermowells.

Lagging Extensions available in most configurations.

SPECIFICATIONS

Material	316L Stainless Steel
Surface Finish	R _a max = 8 microinches
Internal Thread	1/2" NPT Female
Available Fittings	Most Sanitary Fittings
Probe Length	Available in a variety of lengths*

Tri-Clamp® is a registered trademark of Tri-Clover, Inc.

* See Ordering Information for Standard Probe Lengths

AVAILABLE FITTINGS

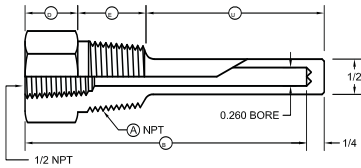
Tri-Clamp®, Cherry-Burrell Male "I" Line, Cherry-Burrell "Q" Clamp, APC "K" Clamp, G&H Male "H" Line, Bevel Seat, Pipe Thread

For other fittings please consult factory.



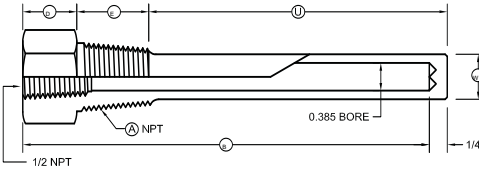
STANDARD THREADED

STRAIGHT SHANK FOR 1/4 IN. DIA. ELEMENTS (.260 IN. BORE)



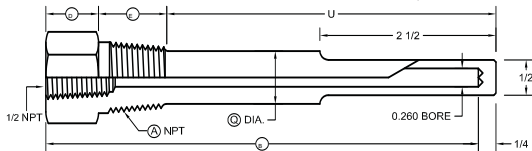
PART NO.	A	B	D	E	U	HEX
TW-1/2NPT-2.5-1/4	1/2	2 1/2	1	5/8	1-1/8	1-1/8
TW-1/2NPT-4-1/4	1/2	4	1	3/4	2-1/2	1-1/8
TW-3/4NPT-2.5-1/4	3/4	2 1/2	5/16	13/16	1-5/8	1-1/8
TW-3/4NPT-4-1/4	3/4	4	3/4	1	2-1/2	1-1/8
TW-1NPT-2.5-1/4	1	2 1/2	5/16	13/16	1-5/8	1-3/8
TW-1NPT-4-1/4	1	4	3/4	1	2-1/2	1-3/8

STRAIGHT SHANK FOR 3/8 IN. DIA. ELEMENTS (.385 IN. BORE)



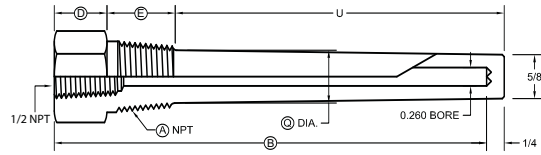
PART NO.	A	B	D	E	U	W	HEX
TW-1/2NPT-4-3/8	1/2	4	1	3/4	2-1/2	5/8	1-1/8
TW-1/2NPT-6-3/8	1/2	6	1	3/4	4-1/2	5/8	1-1/8
TW-1/2NPT-9-3/8	1/2	9	1	3/4	7-1/2	5/8	1-1/8
TW-1/2NPT-12-3/8	1/2	12	1	3/4	10-1/2	5/8	1-1/8
TW-3/4NPT-2.5-3/8	3/4	2 1/2	5/16	13/16	1-5/8	.765	1-1/8
TW-3/4NPT-4-3/8	3/4	4	3/4	1	2-1/2	49/64	1-1/8
TW-3/4NPT-6-3/8	3/4	6	3/4	1	4-1/2	49/64	1-1/8
TW-3/4NPT-9-3/8	3/4	9	3/4	1	7-1/2	49/64	1-1/8
TW-3/4NPT-12-3/8	3/4	12	3/4	1	10-1/2	49/64	1-1/8
TW-3/4NPT-15-3/8	3/4	15	3/4	1	13-1/2	49/64	1-1/8
TW-3/4NPT-18-3/8	3/4	18	3/4	1	16-1/2	49/64	1-1/8
TW-3/4NPT-24-3/8	3/4	24	3/4	1	22-1/2	49/64	1-1/8
TW-1NPT-2.5-3/8	1	2 1/2	5/16	3/16	1-5/8	.765	1-3/8
TW-1NPT-4-3/8	1	4	3/4	1	2-1/2	49/64	1-3/8
TW-1NPT-6-3/8	1	6	3/4	1	4-1/2	49/64	1-3/8
TW-1NPT-9-3/8	1	9	3/4	1	7-1/2	49/64	1-3/8
TW-1NPT-12-3/8	1	12	3/4	1	10-1/2	49/64	1-3/8
TW-1NPT-15-3/8	1	15	3/4	1	13-1/2	49/64	1-3/8
TW-1NPT-18-3/8	1	18	3/4	1	16-1/2	49/64	1-3/8
TW-1NPT-24-3/8	1	24	3/4	1	22-1/2	49/64	1-3/8

STEPPED SHANK FOR 1/4 IN. DIA. ELEMENTS (.260 IN. BORE)



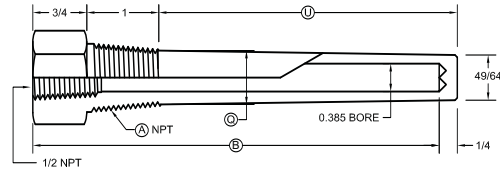
PART NO.	A	B	D	E	Q	HEX
TW-1/2NPT-6-1/4	1/2	6	1	3/4	5/8	1-1/8
TW-1/2NPT-9-1/4	1/2	9	1	3/4	5/8	1-1/8
TW-1/2NPT-12-1/4	1/2	12	1	3/4	5/8	1-1/8
TW-1/2NPT-15-1/4	1/2	15	1	3/4	5/8	1-1/8
TW-1/2NPT-18-1/4	1/2	18	1	3/4	5/8	1-1/8
TW-1/2NPT-24-1/4	1/2	24	1	3/4	5/8	1-1/8
TW-3/4NPT-6-1/4	3/4	6	3/4	1	3/4	1-1/8
TW-3/4NPT-9-1/4	3/4	9	3/4	1	3/4	1-1/8
TW-3/4NPT-12-1/4	3/4	12	3/4	1	3/4	1-1/8
TW-3/4NPT-15-1/4	3/4	15	3/4	1	3/4	1-1/8
TW-3/4NPT-18-1/4	3/4	18	3/4	1	3/4	1-1/8
TW-3/4NPT-24-1/4	3/4	24	3/4	1	3/4	1-1/8
TW-1NPT-6-1/4	1	6	3/4	1	7/8	1-3/8
TW-1NPT-9-1/4	1	9	3/4	1	7/8	1-3/8
TW-1NPT-12-1/4	1	12	3/4	1	7/8	1-3/8
TW-1NPT-15-1/4	1	15	3/4	1	7/8	1-3/8
TW-1NPT-18-1/4	1	18	3/4	1	7/8	1-3/8
TW-1NPT-24-1/4	1	24	3/4	1	7/8	1-3/8

TAPER SHANK FOR 1/4 IN. DIA. ELEMENTS (.260 IN. BORE)



PART NO.	A	B	D	E	Q	HEX
TW-1/2NPT-4T-1/4	1/2	4	1	3/4	5/8	1-1/8
TW-1/2NPT-6T-1/4	1/2	6	1	3/4	5/8	1-1/8
TW-1/2NPT-9T-1/4	1/2	9	1	3/4	5/8	1-1/8
TW-1/2NPT-12T-1/4	1/2	12	1	3/4	5/8	1-1/8
TW-1/2NPT-15T-1/4	1/2	15	1	3/4	5/8	1-1/8
TW-1/2NPT-18T-1/4	1/2	18	1	3/4	5/8	1-1/8
TW-1/2NPT-24T-1/4	1/2	24	1	3/4	5/8	1-1/8
TW-3/4NPT-4T-1/4	3/4	4	3/4	1	7/8	1-1/8
TW-3/4NPT-6T-1/4	3/4	6	3/4	1	7/8	1-1/8
TW-3/4NPT-9T-1/4	3/4	9	3/4	1	7/8	1-1/8
TW-3/4NPT-12T-1/4	3/4	12	3/4	1	7/8	1-1/8
TW-3/4NPT-15T-1/4	3/4	15	3/4	1	7/8	1-1/8
TW-3/4NPT-18T-1/4	3/4	18	3/4	1	7/8	1-1/8
TW-3/4NPT-24T-1/4	3/4	24	3/4	1	7/8	1-1/8
TW-1NPT-4T-1/4	1	4	3/4	1	1-1/16	1-1/8
TW-1NPT-6T-1/4	1	6	3/4	1	1-1/16	1-3/8
TW-1NPT-9T-1/4	1	9	3/4	1	1-1/16	1-3/8
TW-1NPT-12T-1/4	1	12	3/4	1	1-1/16	1-3/8
TW-1NPT-15T-1/4	1	15	3/4	1	1-1/16	1-3/8
TW-1NPT-18T-1/4	1	18	3/4	1	1-1/16	1-3/8
TW-1NPT-24T-1/4	1	24	3/4	1	1-1/16	1-3/8

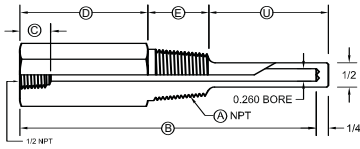
TAPER SHANK FOR 3/8 IN. DIA. ELEMENTS (.385 IN. BORE)



PART NO.	A	B	U	Q	HEX
TW-3/4NPT-4-3/8	3/4	4	2 1/2	7/8	1-1/8
TW-3/4NPT-6-3/8	3/4	6	4 1/2	7/8	1-1/8
TW-3/4NPT-9-3/8	3/4	9	7 1/2	7/8	1-1/8
TW-3/4NPT-12-3/8	3/4	12	10 1/2	7/8	1-1/8
TW-3/4NPT-15-3/8	3/4	15	13 1/2	7/8	1-1/8
TW-3/4NPT-18-3/8	3/4	18	16 1/2	7/8	1-1/8
TW-3/4NPT-24-3/8	3/4	24	22 1/2	7/8	1-1/8
TW-1NPT-4-3/8	1	4	2 1/2	1-1/16	1-3/8
TW-1NPT-6-3/8	1	6	4 1/2	1-1/16	1-3/8
TW-1NPT-9-3/8	1	9	7 1/2	1-1/16	1-3/8
TW-1NPT-12-3/8	1	12	10 1/2	1-1/16	1-3/8
TW-1NPT-15-3/8	1	15	13 1/2	1-1/16	1-3/8
TW-1NPT-18-3/8	1	18	16 1/2	1-1/16	1-3/8
TW-1NPT-24-3/8	1	24	22 1/2	1-1/16	1-3/8

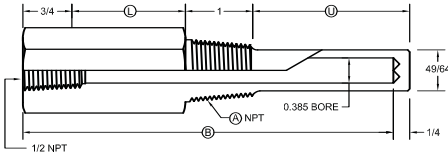
LAGGING EXTENSION THREADED

STRAIGHT SHANK FOR 1/4 IN. DIA. ELEMENTS (.260 IN. BORE)



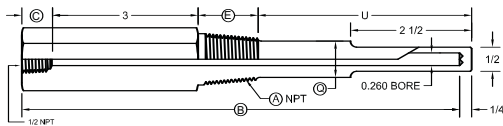
PART NO.	A	B	C	D	E	U	HEX
TW-1/2NPT-4L-1/4	1/2	4	1	1-7/8	3/4	1-5/8	1-1/8
TW-3/4NPT-4L-1/4	3/4	4	1	1-5/8	1	1-5/8	1-1/8
TW-1NPT-4L-1/4	1	4	1	1-5/8	1	1-5/8	1-3/8
TW-1/2NPT-6L-1/4	1/2	6	3/4	2-3/4	1	2-1/2	1-1/8
TW-3/4NPT-6L-1/4	3/4	6	3/4	2-3/4	1	2-1/2	1-1/8
TW-1NPT-6L-1/4	1	6	3/4	2-3/4	1	2-1/2	1-3/8

STRAIGHT SHANK FOR 3/8 IN. DIA. ELEMENTS (.385 IN. BORE)



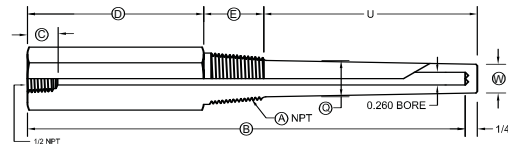
PART NO.	A	B	L	U	HEX
TW-3/4NPT-4L-3/8	3/4	4	7/8	1-5/8	1-1/8
TW-3/4NPT-6L-3/8	3/4	6	2	2 1/2	1-1/8
TW-3/4NPT-9L-3/8	3/4	9	3	4 1/2	1-1/8
TW-3/4NPT-12L-3/8	3/4	12	3	7 1/2	1-1/8
TW-3/4NPT-15L-3/8	3/4	15	3	10 1/2	1-1/8
TW-3/4NPT-18L-3/8	3/4	18	3	13 1/2	1-1/8
TW-3/4NPT-24L-3/8	3/4	24	3	19 1/2	1-1/8
TW-1NPT-4L-3/8	1	4	7/8	1-5/8	1-3/8
TW-1NPT-6L-3/8	1	6	2	2 1/2	1-3/8
TW-1NPT-9L-3/8	1	9	3	4 1/2	1-3/8
TW-1NPT-12L-3/8	1	12	3	7 1/2	1-3/8
TW-1NPT-15L-3/8	1	15	3	10 1/2	1-3/8
TW-1NPT-18L-3/8	1	18	3	13 1/2	1-3/8
TW-1NPT-24L-3/8	1	24	3	19 1/2	1-3/8

STEPPED SHANK FOR 1/4 IN. DIA. ELEMENTS (.260 IN. BORE)



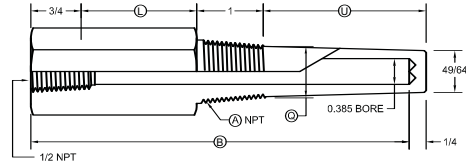
PART NO.	A	B	C	E	Q	HEX
TW-1/2NPT-9L-1/4	1/2	9	1	3/4	5/8	1-1/8
TW-1/2NPT-12L-1/4	1/2	12	1	3/4	5/8	1-1/8
TW-1/2NPT-15L-1/4	1/2	15	1	3/4	5/8	1-1/8
TW-1/2NPT-18L-1/4	1/2	18	1	3/4	5/8	1-1/8
TW-1/2NPT-24L-1/4	1/2	24	1	3/4	5/8	1-1/8
TW-3/4NPT-9L-1/4	3/4	9	3/4	1	3/4	1-1/8
TW-3/4NPT-12L-1/4	3/4	12	3/4	1	3/4	1-1/8
TW-3/4NPT-15L-1/4	3/4	15	3/4	1	3/4	1-1/8
TW-3/4NPT-18L-1/4	3/4	18	3/4	1	3/4	1-1/8
TW-3/4NPT-24L-1/4	3/4	24	3/4	1	3/4	1-1/8
TW-1NPT-9L-1/4	1	9	3/4	1	7/8	1-3/8
TW-1NPT-12L-1/4	1	12	3/4	1	7/8	1-3/8
TW-1NPT-15L-1/4	1	15	3/4	1	7/8	1-3/8
TW-1NPT-18L-1/4	1	18	3/4	1	7/8	1-3/8
TW-1NPT-24L-1/4	1	24	3/4	1	7/8	1-3/8

TAPER SHANK FOR 1/4 IN. DIA. ELEMENTS (.260 IN. BORE)



PART NO.	A	B	C	D	E	Q	W	HEX
TW-1/2NPT-6TL-1/4	1/2	6	1	3	3/4	5/8	1/2	1-1/8
TW-1/2NPT-9TL-1/4	1/2	9	1	4	3/4	5/8	1/2	1-1/8
TW-1/2NPT-12TL-1/4	1/2	12	1	4	3/4	5/8	1/2	1-1/8
TW-1/2NPT-15TL-1/4	1/2	15	1	4	3/4	5/8	1/2	1-1/8
TW-1/2NPT-18TL-1/4	1/2	18	1	4	3/4	5/8	1/2	1-1/8
TW-1/2NPT-24TL-1/4	1/2	24	1	4	3/4	5/8	1/2	1-1/8
TW-3/4NPT-6TL-1/4	3/4	6	3/4	2-3/4	1	7/8	5/8	1-1/8
TW-3/4NPT-9TL-1/4	3/4	9	3/4	3-3/4	1	7/8	5/8	1-1/8
TW-3/4NPT-12TL-1/4	3/4	12	3/4	3-3/4	1	7/8	5/8	1-1/8
TW-3/4NPT-15TL-1/4	3/4	15	3/4	3-3/4	1	7/8	5/8	1-1/8
TW-3/4NPT-18TL-1/4	3/4	18	3/4	3-3/4	1	7/8	5/8	1-1/8
TW-3/4NPT-24TL-1/4	3/4	24	3/4	3-3/4	1	7/8	5/8	1-1/8
TW-1NPT-6TL-1/4	1	6	3/4	2-3/4	1	1-1/16	5/8	1-3/8
TW-1NPT-9TL-1/4	1	9	3/4	3-3/4	1	1-1/16	5/8	1-3/8
TW-1NPT-12TL-1/4	1	12	3/4	3-3/4	1	1-1/16	5/8	1-3/8
TW-1NPT-15TL-1/4	1	15	3/4	3-3/4	1	1-1/16	5/8	1-3/8
TW-1NPT-18TL-1/4	1	18	3/4	3-3/4	1	1-1/16	5/8	1-3/8
TW-1NPT-24TL-1/4	1	24	3/4	3-3/4	1	1-1/16	5/8	1-3/8

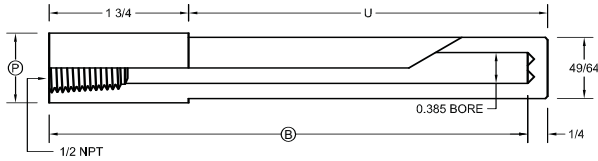
TAPER SHANK FOR 3/8 IN. DIA. ELEMENTS (.385 IN. BORE)



PART NO.	A	B	L	U	Q	HEX
TW-3/4NPT-6LT-3/8	3/4	6	2	2 1/2	7/8	1-1/8
TW-3/4NPT-9LT-3/8	3/4	9	3	4 1/2	7/8	1-1/8
TW-3/4NPT-12LT-3/8	3/4	12	3	7 1/2	7/8	1-1/8
TW-3/4NPT-15LT-3/8	3/4	15	3	10 1/2	7/8	1-1/8
TW-3/4NPT-18LT-3/8	3/4	18	3	13 1/2	7/8	1-1/8
TW-3/4NPT-24LT-3/8	3/4	24	3	19 1/2	7/8	1-1/8
TW-1NPT-6LT-3/8	1	6	2	2 1/2	1-1/16	1-3/8
TW-1NPT-9LT-3/8	1	9	3	4 1/2	1-1/16	1-3/8
TW-1NPT-12LT-3/8	1	12	3	7 1/2	1-1/16	1-3/8
TW-1NPT-15LT-3/8	1	15	3	10 1/2	1-1/16	1-3/8
TW-1NPT-18LT-3/8	1	18	3	13 1/2	1-1/16	1-3/8
TW-1NPT-24LT-3/8	1	24	3	19 1/2	1-1/16	1-3/8

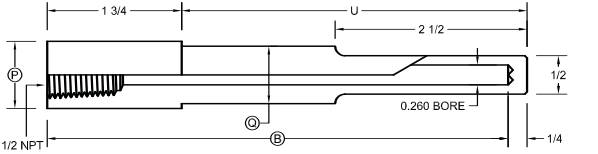
STANDARD SOCKET WELD

STRAIGHT SHANK FOR 3/8 IN. DIA. ELEMENTS (.385 IN. BORE)



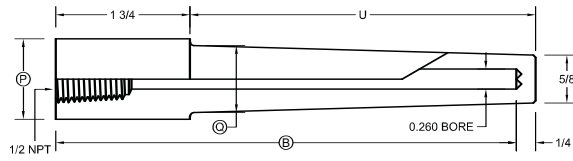
PART NO. (3/4)	P	B	PART NO. (1)	P	B
TW-3/8SW-4-3/8	1.050	4	TW-1SW-4-3/8	1.315	4
TW-3/8SW-6-3/8	1.050	6	TW-1SW-6-3/8	1.315	6
TW-3/8SW-9-3/8	1.050	9	TW-1SW-9-3/8	1.315	9
TW-3/8SW-12-3/8	1.050	12	TW-1SW-12-3/8	1.315	12
TW-3/8SW-15-3/8	1.050	15	TW-1SW-15-3/8	1.315	15
TW-3/8SW-18-3/8	1.050	18	TW-1SW-18-3/8	1.315	18
TW-3/8SW-24-3/8	1.050	24	TW-1SW-24-3/8	1.315	24

STEPPED SHANK FOR 1/4 IN. DIA. ELEMENTS (.260 IN. BORE)



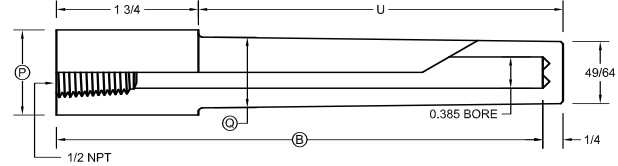
PART NO. (3/4)	Q	P	B	PART NO. (1)	Q	P	B
TW-3/8SW-4-1/4	3/4	1.050	4	TW-1SW-4-1/4	7/8	1.315	4
TW-3/8SW-6-1/4	3/4	1.050	6	TW-1SW-6-1/4	7/8	1.315	6
TW-3/8SW-9-1/4	3/4	1.050	9	TW-1SW-9-1/4	7/8	1.315	9
TW-3/8SW-12-1/4	3/4	1.050	12	TW-1SW-12-1/4	7/8	1.315	12
TW-3/8SW-15-1/4	3/4	1.050	15	TW-1SW-15-1/4	7/8	1.315	15
TW-3/8SW-18-1/4	3/4	1.050	18	TW-1SW-18-1/4	7/8	1.315	18
TW-3/8SW-24-1/4	3/4	1.050	24	TW-1SW-24-1/4	7/8	1.315	24

TAPER SHANK FOR 1/4 IN. DIA. ELEMENTS (.260 IN. BORE)



PART NO. (3/4)	Q	P	B	PART NO. (1)	Q	P	B
TW-3/8SW-4T-1/4	7/8	1.050	4	TW-1SW-4T-1/4	1-1/16	1.315	4
TW-3/8SW-6T-1/4	7/8	1.050	6	TW-1SW-6T-1/4	1-1/16	1.315	6
TW-3/8SW-9T-1/4	7/8	1.050	9	TW-1SW-9T-1/4	1-1/16	1.315	9
TW-3/8SW-12T-1/4	7/8	1.050	12	TW-1SW-12T-1/4	1-1/16	1.315	12
TW-3/8SW-15T-1/4	7/8	1.050	15	TW-1SW-15T-1/4	1-1/16	1.315	15
TW-3/8SW-18T-1/4	7/8	1.050	18	TW-1SW-18T-1/4	1-1/16	1.315	18
TW-3/8SW-24T-1/4	7/8	1.050	24	TW-1SW-24T-1/4	1-1/16	1.315	24

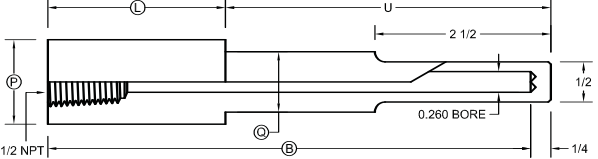
TAPER SHANK FOR 3/8 IN. DIA. ELEMENTS (.385 IN. BORE)



PART NO. (3/4)	Q	P	B	PART NO. (1)	Q	P	B
TW-3/8SW-4T-3/8	7/8	1.050	4	TW-1SW-4T-3/8	1-1/16	1.315	4
TW-3/8SW-6T-3/8	7/8	1.050	6	TW-1SW-6T-3/8	1-1/16	1.315	6
TW-3/8SW-9T-3/8	7/8	1.050	9	TW-1SW-9T-3/8	1-1/16	1.315	9
TW-3/8SW-12T-3/8	7/8	1.050	12	TW-1SW-12T-3/8	1-1/16	1.315	12
TW-3/8SW-15T-3/8	7/8	1.050	15	TW-1SW-15T-3/8	1-1/16	1.315	15
TW-3/8SW-18T-3/8	7/8	1.050	18	TW-1SW-18T-3/8	1-1/16	1.315	18
TW-3/8SW-24T-3/8	7/8	1.050	24	TW-1SW-24T-3/8	1-1/16	1.315	24

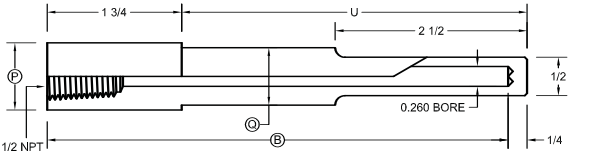
LAGGING EXTENSION SOCKET-WELD

STEPPED SHANK FOR 1/4 IN. DIA. ELEMENTS (.260 IN. BORE)



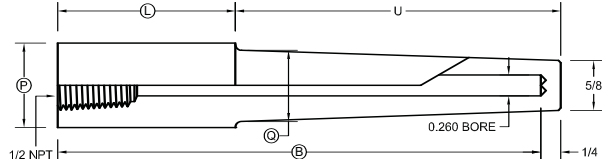
PART NO. (3/4)	B	L	Q	PART NO. (1)	B	L	Q
TW-3/8SW-6L-1/4	6	2	3/4	TW-1SW-6L-1/4	6	2	7/8
TW-3/8SW-9L-1/4	9	3	3/4	TW-1SW-9L-1/4	9	3	7/8
TW-3/8SW-12L-1/4	12	3	3/4	TW-1SW-12L-1/4	12	3	7/8
TW-3/8SW-15L-1/4	15	3	3/4	TW-1SW-15L-1/4	15	3	7/8
TW-3/8SW-18L-1/4	18	3	3/4	TW-1SW-18L-1/4	18	3	7/8
TW-3/8SW-24L-1/4	24	3	3/4	TW-1SW-24L-1/4	24	3	7/8

STEPPED SHANK FOR 3/8 IN. DIA. ELEMENTS (.385 IN. BORE)



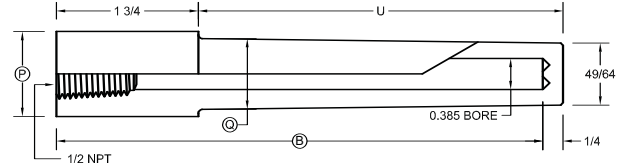
PART NO. (3/4)	B	L	PART NO. (1)	B	L
TW-3/8SW-6L-3/8	6	2	TW-1SW-6L-3/8	6	2
TW-3/8SW-9L-3/8	9	3	TW-1SW-9L-3/8	9	3
TW-3/8SW-12L-3/8	12	3	TW-1SW-12L-3/8	12	3
TW-3/8SW-15L-3/8	15	3	TW-1SW-15L-3/8	15	3
TW-3/8SW-18L-3/8	18	3	TW-1SW-18L-3/8	18	3
TW-3/8SW-24L-3/8	24	3	TW-1SW-24L-3/8	24	3

TAPER SHANK FOR 1/4 IN. DIA. ELEMENTS (.260 IN. BORE)



PART NO. (3/4)	B	L	Q	PART NO. (1)	B	L	Q
TW-3/8SW-6LT-1/4	6	2	7/8	TW-1SW-6LT-1/4	6	2	1-1/16
TW-3/8SW-9LT-1/4	9	3	7/8	TW-1SW-9LT-1/4	9	3	1-1/16
TW-3/8SW-12LT-1/4	12	3	7/8	TW-1SW-12LT-1/4	12	3	1-1/16
TW-3/8SW-15LT-1/4	15	3	7/8	TW-1SW-15LT-1/4	15	3	1-1/16
TW-3/8SW-18LT-1/4	18	3	7/8	TW-1SW-18LT-1/4	18	3	1-1/16
TW-3/8SW-24LT-1/4	24	3	7/8	TW-1SW-24LT-1/4	24	3	1-1/16

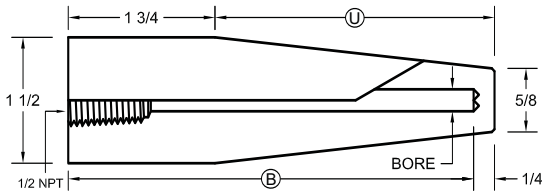
TAPER SHANK FOR 3/8 IN. DIA. ELEMENTS (.385 IN. BORE)



PART NO. (3/4)	B	L	Q	PART NO. (1)	B	L	Q
TW-3/8SW-6LT-3/8	6	2	7/8	TW-1SW-6LT-3/8	6	2	1-1/16
TW-3/8SW-9LT-3/8	9	3	7/8	TW-1SW-9LT-3/8	9	3	1-1/16
TW-3/8SW-12LT-3/8	12	3	7/8	TW-1SW-12LT-3/8	12	3	1-1/16
TW-3/8SW-15LT-3/8	15	3	7/8	TW-1SW-15LT-3/8	15	3	1-1/16
TW-3/8SW-18LT-3/8	18	3	7/8	TW-1SW-18LT-3/8	18	3	1-1/16
TW-3/8SW-24LT-3/8	24	3	7/8	TW-1SW-24LT-3/8	24	3	1-1/16

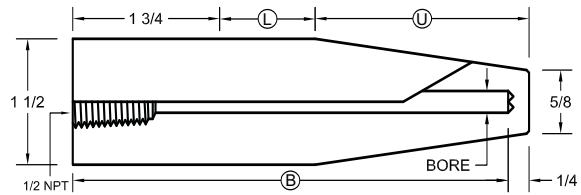
WELD-IN THERMOWELLS

STANDARD



.260 IN. BORE			.385 IN. BORE		
PART NO.	B	U	PART NO.	B	U
TW-1.5WI-4-1/4	4	2-1/2	TW-1.5WI-4-3/8	4	2-1/2
TW-1.5WI-6-1/4	6	4-1/2	TW-1.5WI-6-3/8	6	4-1/2
TW-1.5WI-9-1/4	9	7-1/2	TW-1.5WI-9-3/8	9	7-1/2
TW-1.5WI-12-1/4	12	10-1/2	TW-1.5WI-12-3/8	12	10-1/2
TW-1.5WI-15-1/4	15	13-1/2	TW-1.5WI-15-3/8	15	13-1/2
TW-1.5WI-18-1/4	18	16-1/2	TW-1.5WI-18-3/8	18	16-1/2
TW-1.5WI-24-1/4	24	22-1/2	TW-1.5WI-24-3/8	24	22-1/2

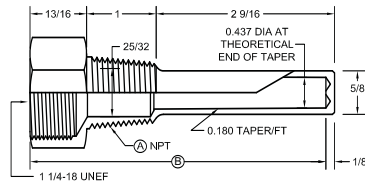
LAGGING EXTENSION



.260 IN. BORE				.385 IN. BORE			
PART NO.	B	L	U	PART NO.	B	L	U
TW-1.5WI-6L-1/4	6	2	4-1/2	TW-1.5WI-6L-3/8	6	2	4-1/2
TW-1.5WI-9L-1/4	9	3	7-1/2	TW-1.5WI-9L-3/8	9	3	7-1/2
TW-1.5WI-12L-1/4	12	3	10-1/2	TW-1.5WI-12L-3/8	12	3	10-1/2
TW-1.5WI-15L-1/4	15	3	13-1/2	TW-1.5WI-15L-3/8	15	3	13-1/2
TW-1.5WI-18L-1/4	18	3	16-1/2	TW-1.5WI-18L-3/8	18	3	16-1/2
TW-1.5WI-24L-1/4	24	3	22-1/2	TW-1.5WI-24L-3/8	24	3	22-1/2

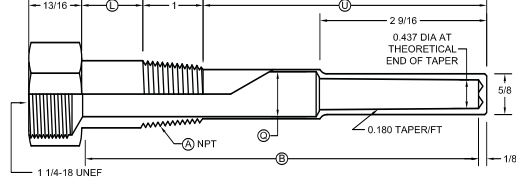
FOR INDUSTRIAL THERMOMETERS

STRAIGHT SHANK



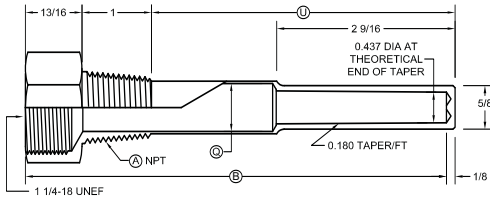
PART NO.	A	B	HEX
TW-3/4PW-4.5	3/4	4-1/2	1-3/8
TW-1PW-4.5	3/4	4-1/2	1-3/8

LAGGING EXTENSION



PART NO.	T	A	B	L	U	Q	HEX
TW-3/4PW-6L	6	3/4	6-25/32	2-5/8	2-9/16	7/8	1-3/8
TW-3/4PW-8	8	3/4	8-25/32	4-5/8	2-9/16	7/8	1-3/8
TW-3/4PW-8EL	8	3/4	8-25/32	2-5/8	4-9/16	7/8	1-3/8
TW-1PW-6L	6	1	6-25/32	2-5/8	2-9/16	1-1/16	1-3/8
TW-1PW-8L	8	1	8-25/32	4-5/8	2-9/16	1-1/16	1-3/8
TW-1PW-8EL	8	1	8-25/32	2-5/8	4-9/16	1-1/16	1-3/8
TW-1PW-12L	12	1	12-25/32	2-5/8	8-9/16	1-1/16	1-3/8

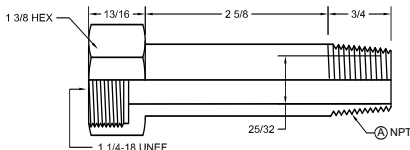
STEPPED SHANK



PART NO.	A	B	L	U	Q	HEX
TW-3/4PW-6	3/4	6	6-25/32	5-1/16	7/8	1-3/8
TW-3/4PW-8	3/4	8	8-25/32	7-1/16	7/8	1-3/8
TW-3/4PW-12	3/4	12	12-25/32	11-1/16	7/8	1-3/8
TW-1PW-6	1	6	6-25/32	5-1/16	1-1/16	1-3/8
TW-1PW-8	1	8	8-25/32	7-1/16	1-1/16	1-3/8
TW-1PW-12	1	12	12-25/32	11-1/16	1-1/16	1-3/8

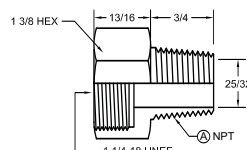
UNIONS & HUBS

STANDARD



PART NO.	A
TW-3/4UH-2.625L	3/4
TW-1UH-2.625L	1

LAGGING EXTENSION



PART NO.	A
TW-3/4H	3/4
TW-1UH	1

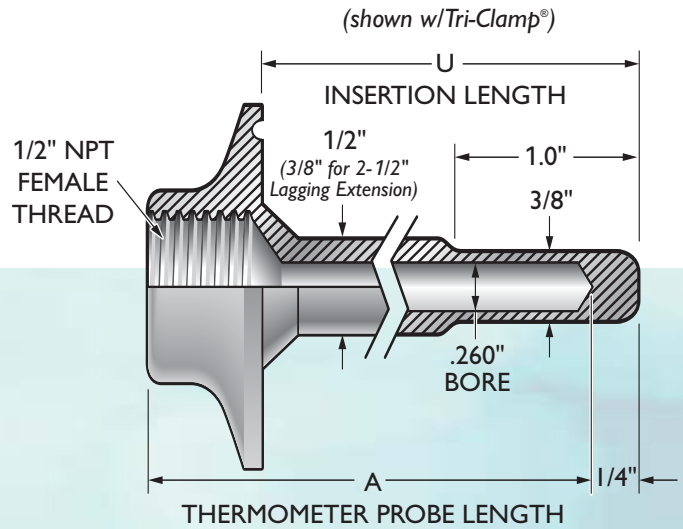
SANITARY THERMOWELLS

DIMENSIONS

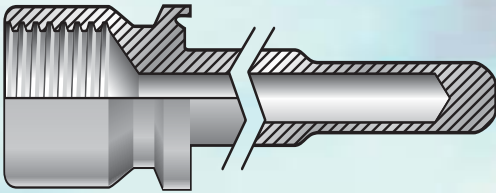
PROBE LENGTH (A)	INSERTION LENGTH (U)
2-1/2"	2-1/8" *
4"	3-5/8" *
6"	5-5/8" *
9"	8-5/8" *
12"	11-5/8" *

* For 3/4" Tri-Clamp Fitting subtract 3/8" from "U" Dimension.
 For Lagging Extension subtract 1-1/8" from "U" Dimension.
 For 3/4" Tri-Clamp With Lagging Extension subtract 1-1/2" from "U" Dimension.

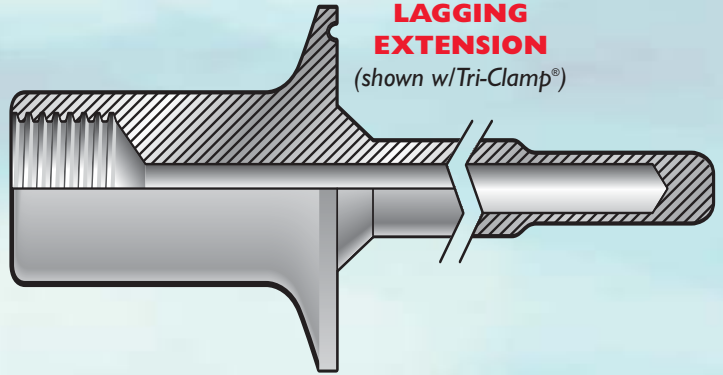
1" AND LARGER FITTINGS



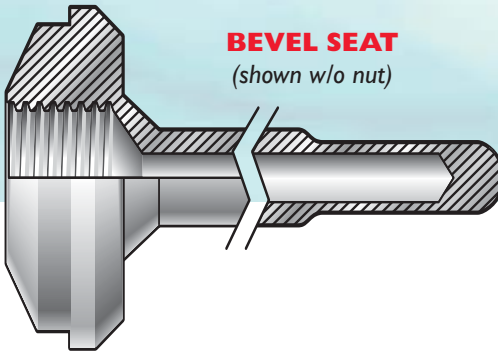
TRI-CLAMP® (3/4")



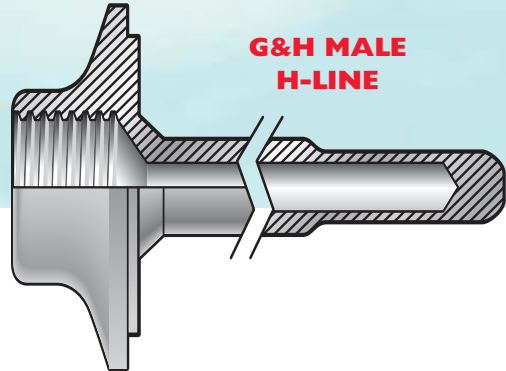
LAGGING EXTENSION (shown w/Tri-Clamp®)



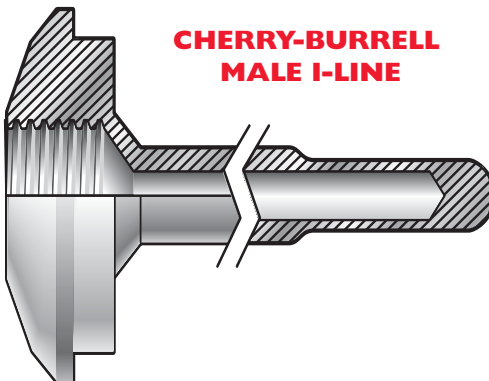
BEVEL SEAT (shown w/o nut)



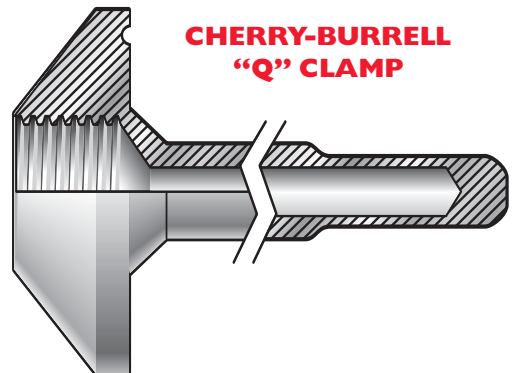
G&H MALE H-LINE



CHERRY-BURRELL MALE I-LINE



CHERRY-BURRELL "Q" CLAMP





SANI-FLOW

SANITARY THERMOWELLS ORDERING INFORMATION

Below are typical examples of models with their descriptions.

EXAMPLE 1: TW - 1 1/2U - 2

Describes a Sani-Flow Thermowell with 1-1/2" Tri-Clamp fitting for a 1/2" NPT thermometer with 2 -1/2" long probe, with pre-installed thermally conductive heat transfer compound.

EXAMPLE 2: TW - 2I - 9L

Describes a Sani-Flow Thermowell with 2" Cherry-Burrell Male I-Line fitting for a 1/2" NPT thermometer with 9" long probe, with lagging extension and pre-installed thermally conductive heat transfer compound.

EXAMPLE 3: TW - 3U - SP18

Describes a Sani-Flow Thermowell with 3" Tri-Clamp fitting for a 1/2" NPT thermometer with Special 18" long probe, with pre-installed thermally conductive heat transfer compound.

MODEL NUMBER CONSISTS OF:

SERIES - FITTING - PROBE LENGTH (A) TW - 1-1/2U - 4

Please make a selection from each category below:

SERIES

TW - Thermowell

SANITARY FITTINGS

(Fittings available in 3/4" thru 3")

H - G&H "H" Line Male

I - Cherry-Burrell Male I-Line

K - APC "K" Clamp

Q - Cherry-Burrell Q-Line

T - #14 Bevel Seat (nut optional)

U - Tri-Clamp®

(Specify size, then adapter type such as 1-1/2U for 1-1/2" Tri-Clamp adapter.)

THERMOMETER

PROBE LENGTH (A)

2 - 2-1/2"

4 - 4"

6 - 6"

9 - 9"

12 - 12"

SP - Special Length*

2L - 2-1/2" with Lagging Extension

4L - 4" with Lagging Extension

6L - 6" with Lagging Extension

9L - 9" with Lagging Extension

12L - 12" with Lagging Extension

SPL - Special Length with Lagging Extension*

* For Special Probe please note the desired length as such: SP24 for a 24" Long Probe or SPL24 for a 24" Long Probe with Lagging Extension

Visit our website or request a catalog to see our complete line of high quality, precision products including: Sani-Flow Pressure Gauges, Homogenizer Pressure Gauges, Digital Thermometers, Pharma-Flow Pressure Gauges, Chem-Flow Pressure Gauges, Thermowells, RTD's, Pressure and Temperature Transmitters

